

**GALLOWES RUN WATERSHED  
RESTORATION AND  
PROTECTION PLAN**

**Figure 7-4  
PRIORITY AREAS**

- LEGEND**
- WATERSHED OUTLINE
  - STREAMS
  - PENNSYLVANIA CANAL
  - WATER BODIES
  - LOCAL ROADS
  - STATE ROADS
  - MUNICIPAL BOUNDARIES
  - PARCEL BOUNDARIES
  - STATE GAME LANDS

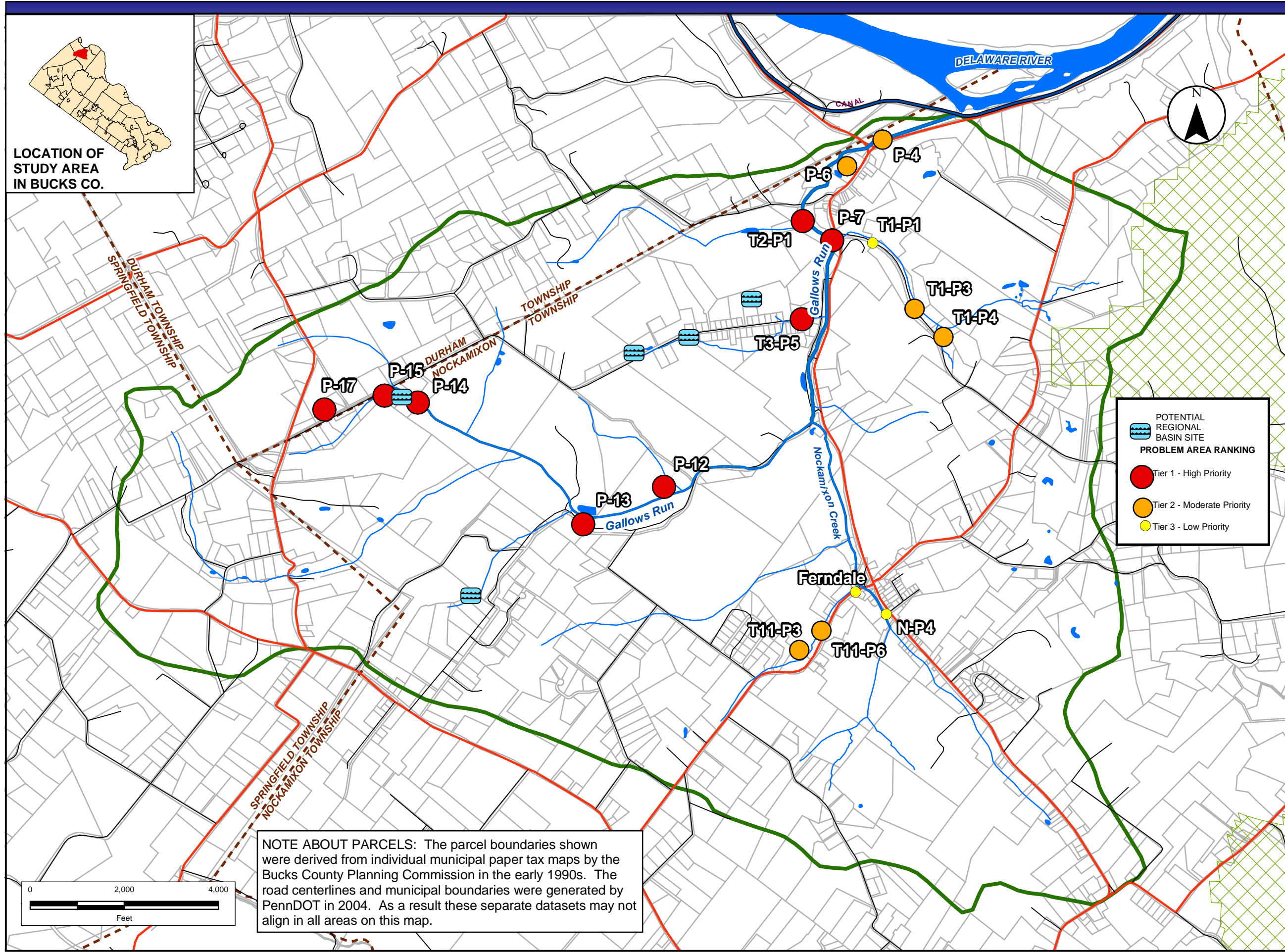
Prepared For:  
**Gallows Run  
Watershed  
Association**

**NOTES:**  
Portions of this map were generated from the existing data sources as listed below. These existing data were utilized for base mapping purposes and are shown for spatial reference only.

Data Sources:  
Watershed Boundary - PADEP, Modified by Borton-Lawson  
State Gamelands - PADEP  
Parcel Boundaries - Bucks County Planning Commission (circa 1990 - Parcel boundaries are only approximate)  
Priority Areas - Identified by Borton-Lawson and Forbes  
Environmental Roads - PennDOT  
Municipal Boundaries - PennDOT  
Streams - PADEP



PREPARED BY: WSB      CHECKED BY:  
DATE: 7/19/2005      PROJECT NO.: 2004-1571-00

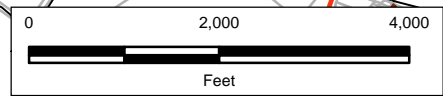


**POTENTIAL REGIONAL BASIN SITE**

**PROBLEM AREA RANKING**

- Tier 1 - High Priority
- Tier 2 - Moderate Priority
- Tier 3 - Low Priority

**NOTE ABOUT PARCELS:** The parcel boundaries shown were derived from individual municipal paper tax maps by the Bucks County Planning Commission in the early 1990s. The road centerlines and municipal boundaries were generated by PennDOT in 2004. As a result these separate datasets may not align in all areas on this map.



FILE: \\WBData\Projects\2004\1571\00\DATA\GIS\ArcMap\watershed\_gallows-draft.mxd

**LOCATION OF STUDY AREA IN BUCKS CO.**

